

# Your utility is helping you save on electricity costs!

## That's **ENERGY SMART** PROGRAM

As a part of our **ENERGY SMART** program, the GHBLP contracted with Franklin Energy to provide a variety of program and rebate offers for both our residential and commercial customers. Go to [mienergysmart.com](http://mienergysmart.com) for a complete list of incentives.

### Get Rebates for purchasing Energy Efficient Appliances and Products

**Step 1.** Visit [mienergysmart.com](http://mienergysmart.com) and select Grand Haven as your city in the drop down menu.

**Step 2.** Locate the residential application on your city's page and download.

**Step 3.** Complete the application after the equipment is purchased or installed. Remember to sign application.

**Step 4.** Mail a copy of your receipt and completed application to: **Energy Smart** - 1400 Abbott Road, Suite 400, East Lansing, MI 48823.

**Step 5.** Receive your incentive check from your local utility in 6-8 weeks.

PRODUCT	INCENTIVE
<b>ENERGY STAR</b> ® DEHUMIDIFIER	\$15
<b>ENERGY STAR</b> ® REFRIGERATOR	\$25
<b>ENERGY STAR</b> ® ROOM AIR CONDITIONER	\$15
<b>ENERGY STAR</b> ® PERSONAL COMPUTER	\$15
<b>ENERGY STAR</b> ® CLOTHES DRYER	\$25
INTELLIGENT SURGE PROTECTOR	\$10
PROGRAMMABLE THERMOSTAT	\$15
<b>ENERGY STAR</b> ® FREEZER CHEST OR UPRIGHT	\$20
<b>ENERGY STAR</b> ® MONITOR	\$15
<b>ENERGY STAR</b> ® TV	\$30
<b>ENERGY STAR</b> ® HIGH EFFICIENCY HEAT PUMP WATER HEATER (replacing electric water heater)	\$150
ELECTRIC HOT WATER HEATER	\$25

Limited funds are available. Please allow 6-8 weeks to receive your Energy Smart incentive check. Applications must be received by December 31, 2015 to qualify for this year's program. For more information, please call 877-NRG-SAV1 (877-674-7281), fax 517-203-0658 or visit [mienergysmart.com](http://mienergysmart.com)



### BLP Christmas Light Exchange

Residential customers only - bring in a string of regular, working Christmas lights to our Service Center, 1700 Eaton Drive, and in exchange, we will give you **Mini LED Christmas lights for FREE!** One string per household while supplies last.

*The BLP Wishes all of our customers a Merry & Bright Holiday Season!*



Created in 1896, the Board of Light & Power is one of more than 2,000 community-owned electric utilities serving homes and businesses across the United States. We are locally-controlled by a five-member Board of Directors elected by Grand Haven residents with approximately 13,750 customers in the greater Grand Haven area.

#### Your Board of Directors:

Jack Smart, Chairperson

Gerald Witherell, Vice Chairperson

Larry Kieft, Director

John Naser, Director

Jim VanderMolen, Director



**PLUGGED IN** is a publication of the Grand Haven Board of Light & Power. Questions and comments may be submitted to our **Customer Service Department at:**

1700 Eaton Drive, Grand Haven, MI 49417

p 616.846.6250 | f 616.846.3114

Emergency: 616.842.2241 | E-Mail: [blpservice@ghblp.org](mailto:blpservice@ghblp.org)

Pay your bill online - visit [ghblp.org](http://ghblp.org)

# PLUGGED IN

News and Information from your Community-Owned Electric Utility

Grand Haven Board of Light & Power

November & December 2015



#### Inside:

- 2015 Cost of Service Study
- Holiday Safety Checklist
- Pet Safety/Child Safety
- Hometown Helping Hand
- Energy Smart Rebates



**GRAND HAVEN BOARD OF LIGHT & POWER**

[ghblp.org](http://ghblp.org)

Community-Owned. Locally Controlled.  
Not-for-Profit. Environmentally Responsible.

# 2015 Cost of Service Study



The Board of Light & Power is contracting with Utility Financial Solutions, LLC (UFS) of Holland, MI for a comprehensive electric cost of service and retail rate design study. UFS has completed over 300 such studies for municipal utilities in 42 states with over 20 in the State of Michigan.

A Cost of Service Study is one of the most effective tools an electric utility can utilize to ensure rates are equitably assigned among its rate classes. This analysis is also a useful guideline for assigning cost responsibility in a manner that avoids price discrimination.

There are a number of considerations in determining the level and structure of rates a utility should charge its customers. UFS will evaluate the fixed and variable costs associated with providing electrical service to the BLP's customers with the following objectives:

- Develop a long-term financial plan to identify current and projected rate changes.
- Determine the cost of providing electric service to each class of customer.
- Review utility rate classes and recommend additional, or potentially fewer, rate classes or alternative rate forms for existing customer classes.
- Assess pole attachment fees consistent with FCC guidelines and industry practices.
- Review and modify the power cost adjustment calculation and method.
- Propose rate changes to address identified issues.

UFS plans to have the study complete by February 2016 and will report its findings to BLP management and Board of Directors. The revised rate structures will most likely become effective July 1, 2016, which is when the BLP will pay off its debt service on the J.B. Sims Generating Station.

## Holiday Safety Check List



Grand Haven Board of Light & Power provides these tips for those who are undertaking holiday lighting and decorating projects to help you do them safely.



**STRING OF LIGHTS** Carefully check each string of lights before use. If any are cracked or damaged, discard and replace with new lights. Make sure electrical cords and decorations have a safety label like UL, ETL or CSA.



**GFCI'S** Plug outdoor decorations into outlets protected by Ground Fault Circuit Interrupters (GFCIs) to prevent shock. Automatic lighting timers can be used to ensure that lights are not left on by mistake and to help you save on your holiday electric bills. These are available for both indoor and outdoor use.



**UNPLUG** Don't force a 3-prong plug into a 2-prong outlet or extension cord. Unplug all holiday lights before you go to sleep or leave home.

## Pet Safety

Wind up excess cords and hide them from view or place cords out of a pet's reach. This could be done by hiding them behind furniture or hanging them off the floor. Appropriate and safe products can be purchased online or at pet stores to coat cords with a bitter substance to make them undesirable to pets.

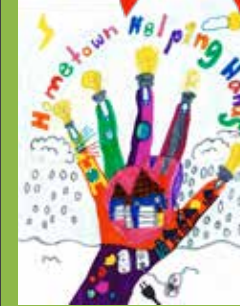


## & Child Safety

Avoid putting Christmas tree lights, ornaments, metal hooks, and other small "mouth-sized" decorations near the ground or on lower limbs where they may be easily reached. Instead of traditional candles, try using battery-operated candles so you can avoid the hazards associated with open flames.

## Hometown Helping Hand

### How can you help?



Artist - Lucy Roop



The Grand Haven Board of Light & Power held its 3rd Annual Hometown Helping Hand Art Contest and received **2,076 entries!** This year's Grand Winner is

**Fourth Grader, Lucy Roop from Robinson Elementary.**

Through this contest, participating students and local elementary students have an opportunity to win cash prizes while the Board of Light & Power works to spread the word about this important program. Hometown Helping Hand provides funding to help families in need in the greater Grand Haven area who are struggling to pay their past due electric bills.

The BLP donates 50% of the proceeds from revenues generated by our door tag disconnect notice program. The balance of the funding comes from one-time and monthly donations and through local support groups. 100% of the funds collected are distributed to qualifying BLP customers through the Salvation Army's assistance program. In **FY2015, \$18,719.37** was donated to BLP customers in need. Please consider a **tax deductible donation** to Hometown Helping Hand this holiday Season.

For a one time donation, simply include a separate check with your utility bill stub written to **HOMETOWN HELPING HAND.**

To make a monthly contribution, complete the form below and mail in or drop off with your electric bill.

Name \_\_\_\_\_

Address \_\_\_\_\_

Signature \_\_\_\_\_

Bill me monthly. \$1.00 \$3.00 \$5.00 Other \_\_\_\_\_  
(Circle or write in amount)

Thank you for your helping hand!