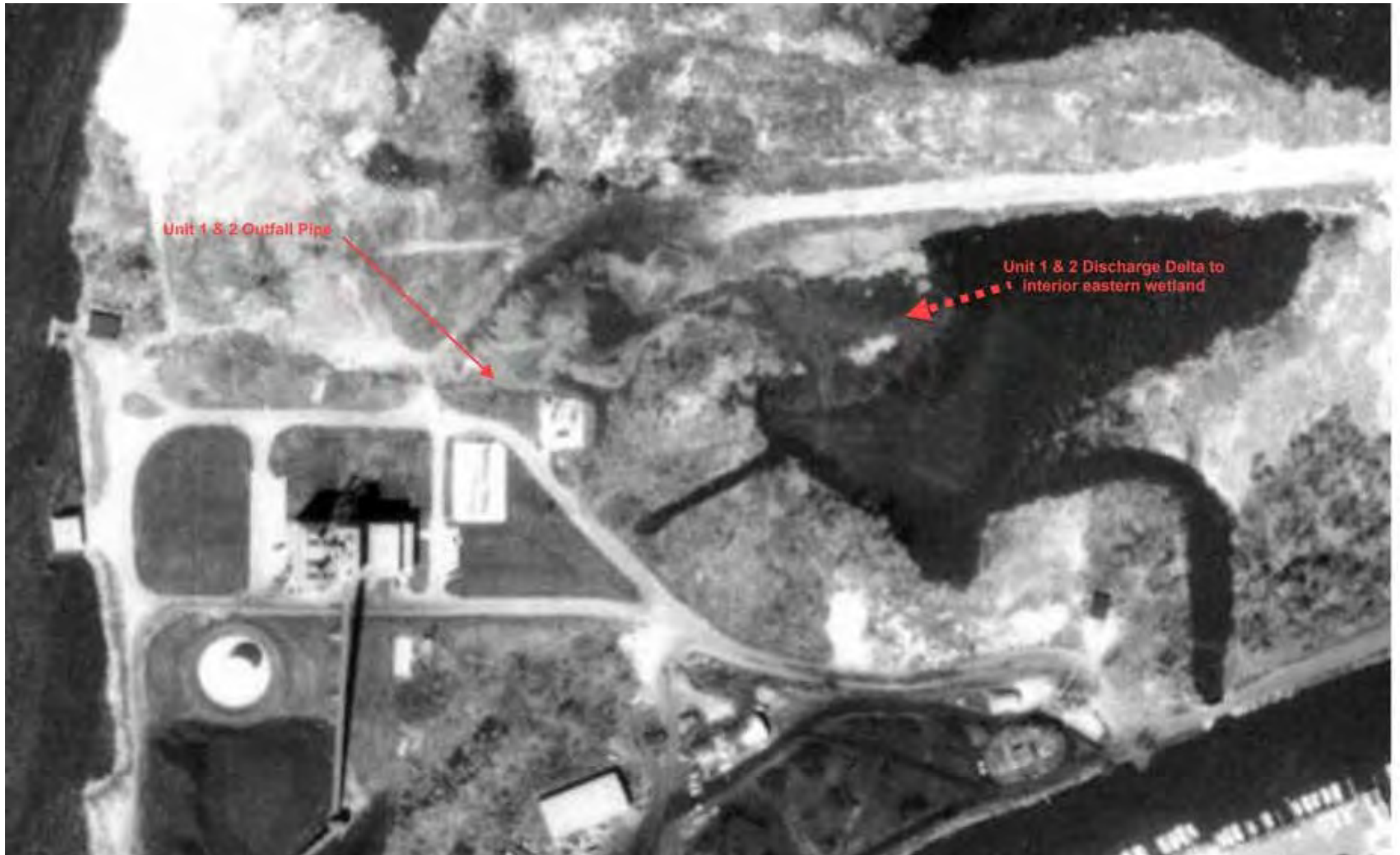


Meeting to discuss CCRs at the
former JB Sims powerplant

1968 aerial photo which shows the Units 1 & 2 outfall pipe and the discharge delta in the interior of the eastern wetland.

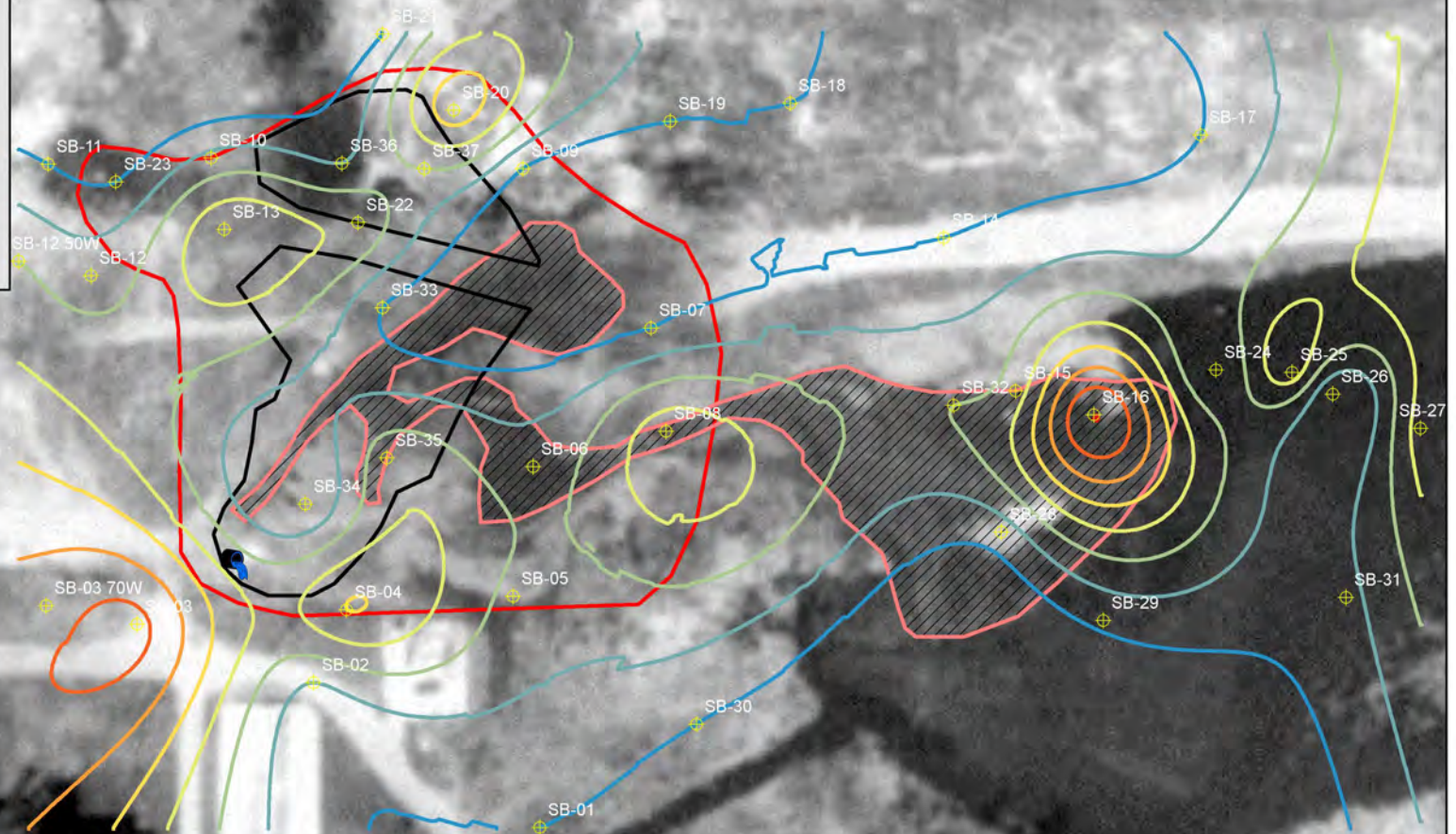


1968 Historic Aerial: East Channel Discharge

- ⊕ Soil Borings
- 🔌 Pond 1/2 Discharge Pipe
- ▨ East Channel
- ▭ Current Day Ponds 1/2
- ▭ JB Sims Proposed CCR Removal

CCR Thickness Feet of CCR

- 0
- 1
- 2
- 3
- 4
- 5
- 6
- 7

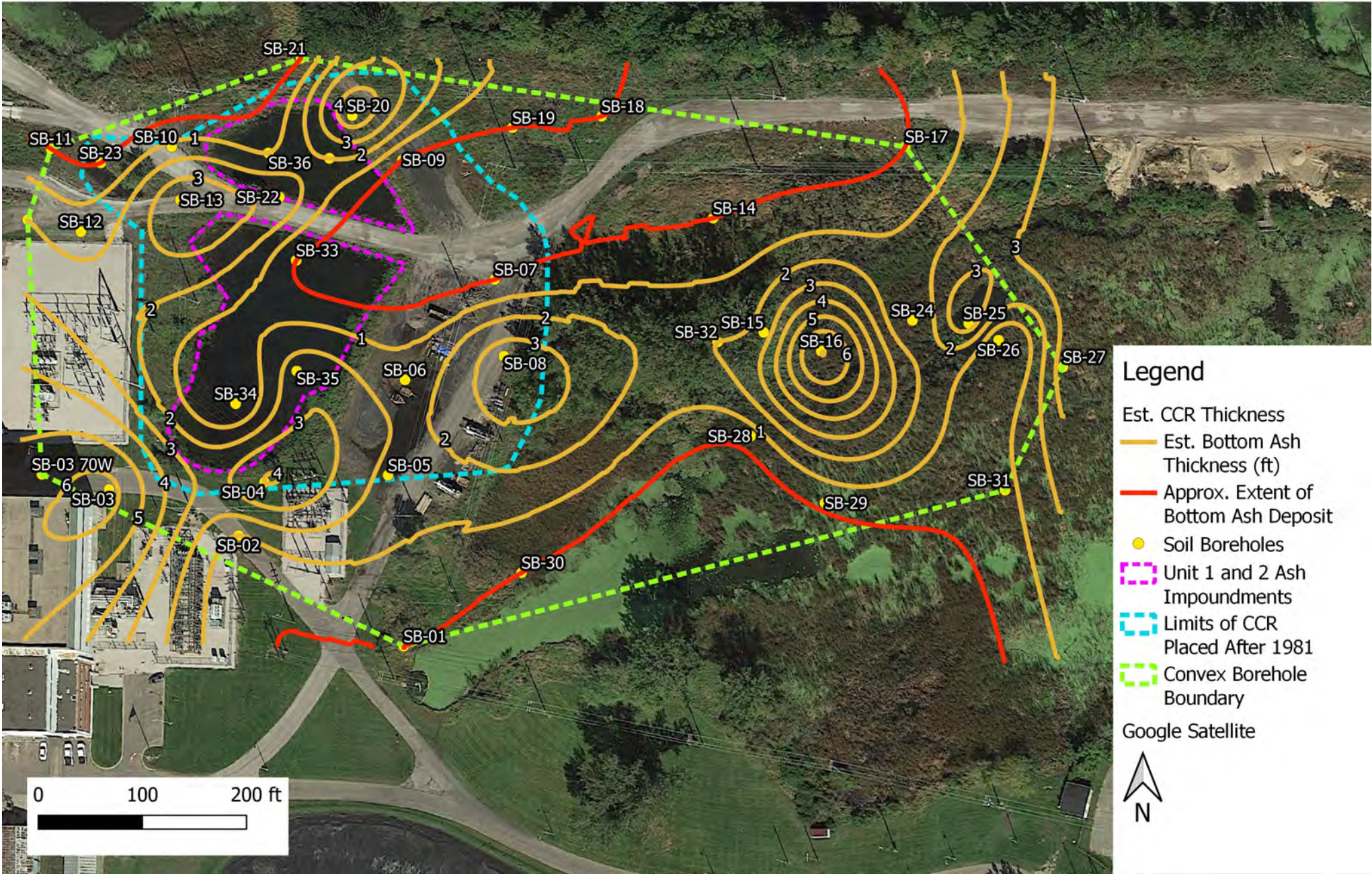


0 50 100 200 300
Feet

Thickness of CCR at J.B. Sims Generating Station

Diagram indicating the approximate extend of bottom ash deposit.

Developed by EPA’s contractor
October 2020





An April 14, 2016 aerial photo from Google Earth that indicates that areas to the east of Units 1 & 2 also contains liquids.

R:\Cadd\CIE-H\Grand Haven BLP\0318810\base.dwg, ASH DEPTH, 12/18/2015 1:37:13 PM, GML

