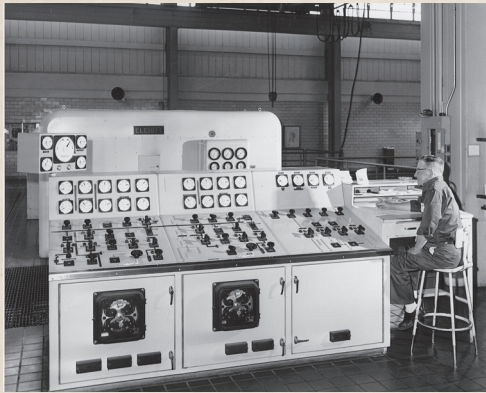
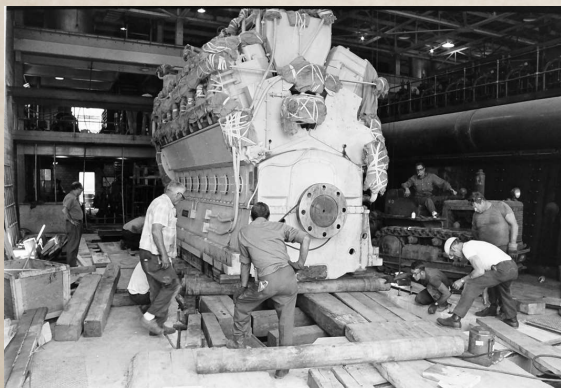


# Celebrating 130 Years!

This year marks an important milestone for our community - 130 years of locally owning our own electric utility. The BLP looks very different today than it did when it was first created in 1889, but our mission remains the same: to deliver reliable and affordable power to the community that we serve.

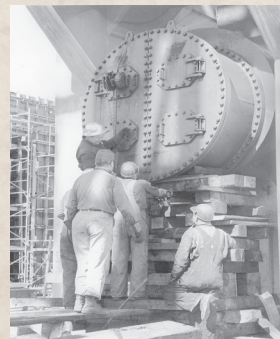
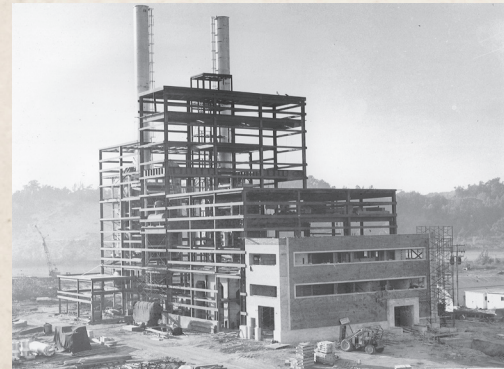


Grand Haven's electric utility traces its origins to September 29, 1896, when citizens approved a \$10,000 bond to purchase the city's first municipal electrical generator—a Corliss engine.



In the years that followed, the utility expanded its power generation capabilities, transitioning from small steam engines to more efficient steam turbines. Continued growth and increasing demand led to the construction of the Grand Haven BLP Diesel Plant, further strengthening the city's energy infrastructure.

Eventually, this evolution culminated in the development of the much larger Sims Power Plant which operated for nearly 60 years until the last unit was retired in 2020.



Today, we provide power to our community through the broader electrical grid while continuing to increase the amounts of renewable energy resources across the state of Michigan.

Times and methods for power generation have changed dramatically over the years, and our local BLP has consistently adapted to meet those changes. We will continue to evolve to ensure our community receives reliable, affordable and sustainable power well into the future.

Our electrical network has also grown exponentially over the past century, with the construction of a 69 kV transmission system, four electric substations, and more than 112 miles of overhead and 76 miles of underground distribution lines.



As we look back on our strong history, it's clear there is so much to be proud of. And as we look ahead, our future shines even brighter – powered by innovation, strengthened by community support, and driven by a continued commitment to service.



One thing that has never changed is our workforce's unwavering commitment to the community. BLP electrical workers aren't just employees – they are your friends, your neighbors, and the people who stand ready day and night to keep the lights on for every home and business we serve. Their dedication reflects the pride we all share in this community.



# HELP KEEP LINEWORKERS SAFE

Lineworkers take great pride in providing safe and reliable service, but their job involves working around high-voltage power lines in all kinds of weather conditions.



## DO YOUR PART TO HELP KEEP LINEWORKERS SAFE



Never plug a generator into an indoor or outdoor wall outlet, which can cause voltage to back feed.



Workers need to efficiently and safely restore power when it goes out; please be patient.



Do not post signs on a utility pole, especially with staples and nails, which can puncture protective gear.



Slow down and move over in utility work zones. Crowding workers can cause accidents.



## PLUGGED IN

### Partnering in Safety

You can help us keep our power safe and reliable. If you see a downed line or power equipment that's at risk of damage from a tree, please contact our customer service team. Remember to always stay 50 feet from downed lines, even if they don't look energized.

Customer Service 8:00 am - 5:00 pm  
24 hour Emergency Service  
616-846-6250



### Your Board of Directors:

Michael J. Westbrook, Chairperson  
Todd B. Crum, Vice Chairperson  
Phil Polyak, Director  
Kurt Knoth, Director  
Mike Welling, Director

### Grand Haven Board of Light & Power

1700 Eaton Drive, Grand Haven, MI 49417  
616.846.6250 | ghblp.org

## Honoring Our Past



May - June 2026