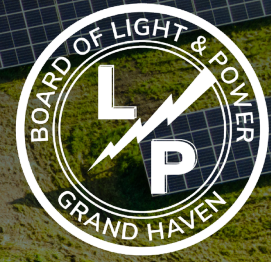


# Community Solar Garden



## A solar garden built by the community, for the community.

The proposed community solar garden is a BLP-sponsored solar array that would be installed directly in our community. Grand Haven Board of Light & Power customers can voluntarily participate by making a one-time payment of \$570 per 300-watt share to support the project. Participation enables customers to directly benefit from local renewable energy generation without the costly investment of installing and maintaining panels on their own property. Participants will receive electric bill credits corresponding to their share of the clean renewable energy locally produced by the array.



**Open to Everyone:** renters, homeowners, commercial business and industries alike



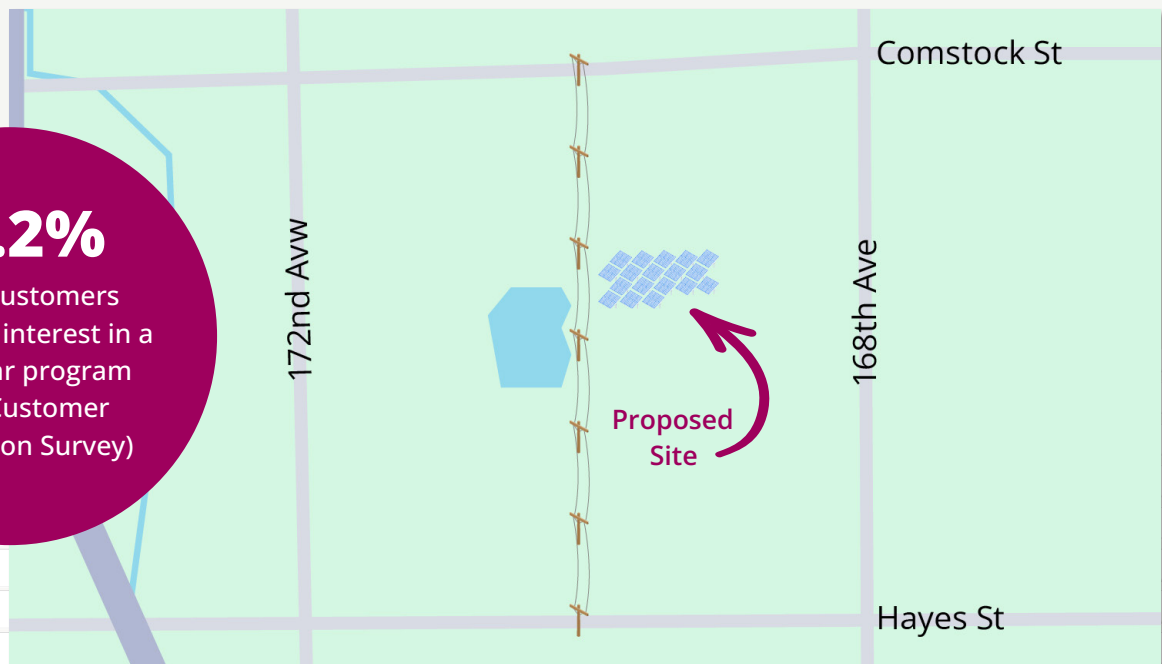
**Local & Voluntary:** a community-owned project you can choose to join



**Bill Credits:** your share of locally-produced renewable energy is credited to you monthly

**46.2%**

of BLP customers expressed interest in a local solar program (2025 Customer Satisfaction Survey)

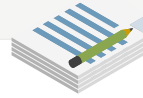


## How It Works



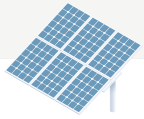
1

Your completed application, signed lease agreement, and one-time payment (\$570 per 300W share) are due by December 15, 2026. Cash or check payments will be accepted. Customers can mail in a check or pay in person at the BLP service center.



2

Once the project reaches a 33% participation rate, the BLP will execute lease agreements with participating members, and construction on the project will commence.



3

The array generates solar energy.



4

You receive monthly renewable energy bill credits for your proportional share at \$0.06385 / kWh.



## Frequently Asked Questions

### Will this save me money?

Local solar arrays are smaller in scale than large utility-scale projects, so they do not benefit from the same cost efficiencies. There is no guarantee that the total value of your solar credits will surpass the cost of your initial subscription over time. The program is best for participants looking to support a local renewable resource rather than financial gain.

### What happens if I move?

If you move to a location within the BLP service area, you can transfer your subscription. If moving outside of the area, you can donate your subscription to a local 501(C)(3) nonprofit.

### Does BLP already provide renewable energy?

Yes, the BLP has already invested in several large-scale renewable energy projects throughout the state, with renewable resources accounting for approximately 30% of the community's annual power supply purchases. This smaller-scale solar garden gives our community the opportunity to directly support a local renewable energy initiative.

### When will it be built?

If enough BLP customers enroll to fund 33% of the project by Dec 15, 2026, we will begin construction with completion by the end of 2027. If the project does not receive enough interest by Dec 15, construction will not proceed and participants will receive a full refund.

## Who is this for?

Many BLP customers want to support local renewable energy but face real barriers: a shaded roof, a landlord's restrictions, or the high cost of a private installation. The Community Solar Garden removes those barriers for all residential, commercial and industrial customers. Any customer on the BLP system can voluntarily participate in this local renewable energy project!

## Get Started

Enrollment is easy and forms are available by either scanning the QR code or going to



[ghblp.org/sustainability/community-solar/](https://ghblp.org/sustainability/community-solar/)